

SINGAPORE CHINESE GIRLS' SCHOOL
PRIMARY 5 SCIENCE
Term 1 Weighted Assessment
Topics: Reproduction in Plants & Heredity and Reproduction

Term 1 WA

Name: _____ ()

Date:

Class: Primary 5

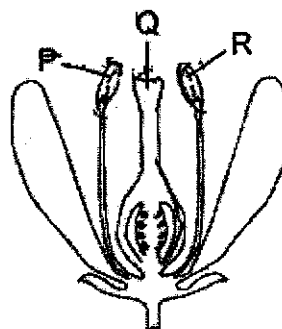
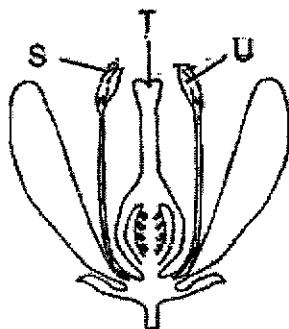
	Total Actual Marks	Total Possible Marks
Section A		14
Section B		11
Total		25

Parent's signature

Section A (14 marks)

For each question from 1 to 7, four options are given. One of them is the correct answer. Choose the correct answer and write its number in the Answer Sheet on Page 4.

1. The diagram below shows 2 flowers.



Pollination takes place when pollen grains are transferred from _____.

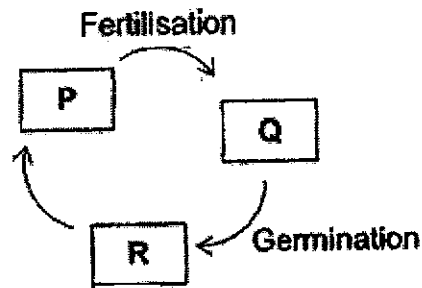
- 1) S to P
- 2) R to T

- 3) Q to U
4) T to Q

2. Which one of the following statements best describes why plants disperse their seeds?

- 1) To avoid overcrowding
- 2) To ensure pollination take place
- 3) To ensure fertilisation take place
- 4) To pass on characteristics to their young

3. The diagram below shows the life cycle of a plant.



Which one of the following correctly represents P, Q and R?

	P	Q	R
1)	Seed	Adult plant	Young plant
2)	Seed	Young plant	Adult plant
3)	Adult plant	Seed	Young plant
4)	Young plant	Adult plant	Seed

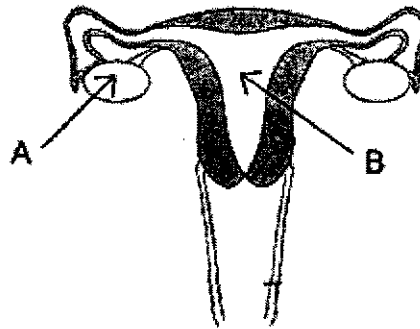
4. The table below shows the characteristics of 3 fruits, P, Q, and R.

Fruit	Characteristics
P	Is light and has hooks
Q	Carries many seeds in its pod
R	Is edible and has fibrous husk

Which of the following shows how P, Q and R are dispersed?

	P	Q	R
1)	By wind	By splitting	By Man / animals
2)	By water	By water	By Man / animals
3)	By wind	By Man / animals	By splitting
4)	By Man / animals	By splitting	By water

5. The diagram below shows one of the human reproductive systems.



Which of the following correctly describes parts A and B respectively?

	A	B
1)	Where the eggs are stored	Where the baby develops
2)	Where the baby develops	Where the eggs are stored
3)	Where the sperms are stored	Where the sperms are released
4)	Where the sperms are released	Where the sperms are stored

6. Which of the following statements about sexual reproduction in both plants and animals are true?

A: Pollination must take place before fertilisation.

B: Characteristics are passed down to their young.

C: During fertilisation, the male sex cell fuses with the female sex cell.

1) A and B only

3) B and C only

2) A and C only

4) A, B and C

7. Which of the following parts belong to the male reproductive system?

A: Penis

C: Ovary

B: Testes

D: Vagina

1) A and B only

3) B and D only

2) A and C only

4) C and D only

SINGAPORE CHINESE GIRLS' SCHOOL
PRIMARY 5 SCIENCE

Term 1 WA

Term 1 Weighted Assessment

Topics: Reproduction in Plants & Heredity and Reproduction

Name: _____ ()
 Class: Primary 5

Date: _____

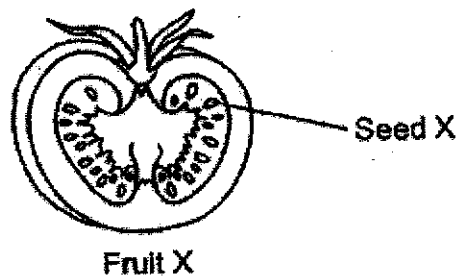
Answer Sheet for Section A

- | | |
|------------|------------|
| 1. () | 5. () |
| 2. () | 6. () |
| 3. () | 7. () |
| 4. () | |

Section B (11 marks)

For Questions 8 to 10, write your answers in the space provided.

8. Sumin cut open Fruit X as shown below.



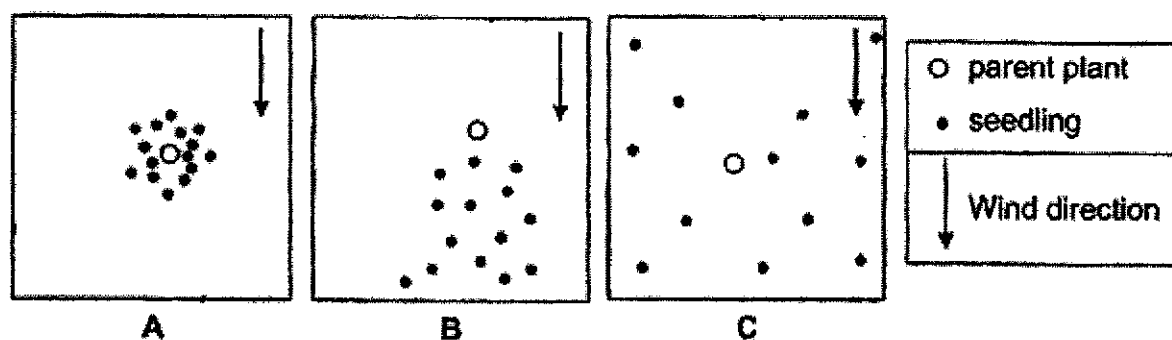
- a) For the adult plant to produce the fruit above, which 2 processes must take place? (1m)

- b) Fruit X and Seed X were developed from Flower X.

Fruit X was developed from the _____ of Flower X. (½ m)

Seed X was developed from the _____ of Flower X. (½ m)

9. Study the dispersal of seeds by Plants A, B and C in 3 plots of land below.



- a) How were their seeds dispersed? (3m)

Plant A: _____

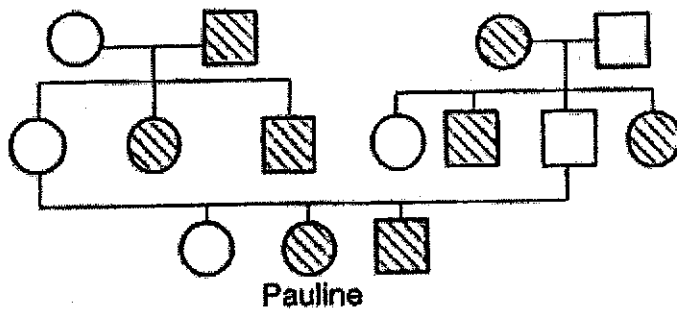
Plant B: _____

Plant C: _____





- b) The seedlings of Plant A are closer to each other as compared to the seedlings of Plant B and Plant C.

List the 4 factors seedlings of Plant A will have to compete more for. (2m)

10. Study the family tree below.



Key

-  Male with Characteristic P
-  Male without Characteristic P
-  Female with Characteristic P
-  Female without Characteristic P

Based on the family tree above, indicate if each of the statements is true, false or not possible to tell putting a tick (✓) in the correct column. (3m)

	True	False	Not possible to tell
a) Pauline inherited Characteristic P from her aunt.			
b) If both parents have Characteristic P, their children will definitely have characteristic P.			
c) If both parents do not have Characteristic P, their children will definitely not have characteristic P.			

d) Using the information given in the family tree, explain your answer for (c). (1m)

SCHOOL : SINGAPORE CHINESE GIRLS PRIMARY SCHOOL
LEVEL : PRIMARY 5
SUBJECT : SCIENCE
TERM : 2021 CA1

SECTION A

Q 1	Q2	Q3	Q4	Q5	Q6	Q7
2	1	3	4	1	3	1

SECTION B

Q8a)	Pollination and fertilisation
Q8b)	Fruit X was developed from the ovary of Flower X Seed X was developed from the ovule of Flower X
Q9a)	Plant A: By splitting Plant B: By wind Plant C: By animals
Q9b)	Mineral salts, Space, Sunlight, Water
Q10)	a) False b) Not possible to tell c) False
Q10d)	Pauline's parents both do not have Characteristic P but Pauline and her brother have Characteristic P.

